

39TH • CAPCA Spring Meeting

APRIL 2-4, 2008



GROVE PARK INN • ASHEVILLE, NORTH CAROLINA

About The Conference:

This technical conference is designed for engineers, plant managers, regulatory personnel, consultants, lawyers, industrial & manufacturing personnel, project managers, business executives or any other persons who face environmental issues, environmental compliance, regulations, etc.



MARK YOUR CALENDAR!

APRIL 2-4, 2008

Grove Park Inn • Asheville, N.C.

Please register to attend the 39th Spring Meeting.

Proposed Key Topics to Be Covered . . .

- Fine Particulate
- Source Testing & Opacity/Visual Emissions
- NC, SC, Local Program Updates
- Air Directors Panel
- Climate Changes/Changing Climates
- Greenhouse Gas Inventories & Registries
- New Developments in Air Toxics
- Developments in Air Toxics
- Much more!

Registration Fee Includes . . .

- Admittance to All Technical Sessions
- Admittance to the Exposition
- Wednesday Night Symposium
- Thursday Night Symposium in Exhibit Hall
- Attendees Roster
- 2 Morning Coffees, 2 Luncheons, and 4 Refreshment Breaks

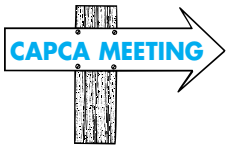


Spring 2008 Contributors

Get the best bang for your bucks.

Companies that contribute prior to the Spring meeting receive recognition at both Spring and Fall conferences.

If you are interested in being a Contributor, call the CAPCA Office at (919) 676-6099 for information. Contributions are tax deductible.



Registration Information

- ✓ Complete the conference registration form.
- ✓ GUESTS (meaning spouse, date) - who will be attending meals and/or social functions must purchase guest tickets in order to attend the function(s). Please complete the guest information on the registration form.
- ✓ CHILDREN 13 and over attending social functions and/or meals: please call the CAPCA Office for rates.
- ✓ RECEIPTS: Your canceled check is your receipt unless the receipt block is checked on the registration form. Only ONE person can register on each form. Copy to submit multiple attendees.
- ✓ SAVE \$\$\$\$ on Registration Fees: You may become a member TODAY by including your dues of \$35 and register using the member rate. Dues run on a calendar year basis.
- ✓ If you need a certificate of attendance, please check the appropriate box on the registration form.

Registration Fees

Member Pre-Registration — \$200

(Postmarked by March 1st)

Member Registration — \$225

(Postmarked by March 1st)

Non-Member Pre-Registration — \$250

(Postmarked by March 1st)

Non-Member Registration — \$275

(Postmarked by March 1st)

2008 CAPCA Dues: \$35

NO ACKNOWLEDGEMENT WILL BE SENT.

We will contact you in the unlikely event of a canceled meeting.

Mail Registration to:

CAPCA
P.O. Box 33430
Raleigh, NC 27636



If you have any questions about your **registration, call: (919) 676-6099**. Please be prepared to leave a detailed voice message. Your call will be returned within a few hours.

Cancellation Policy

1. Dues are NOT refundable or transferable.
2. Cancellations must be made prior to **March 20, 2008**.
3. A **\$10 non-refundable processing fee** is required of all cancellations.
4. Substitutions are accepted upon notification prior to **March 20, 2008**.

CAPCA Dues

CAPCA dues are valid for the calendar year in which they are paid. Dues may be paid from January 1 - December 31 for any given year. Dues are not transferrable. All 2008 dues are due now. Please pay your dues with your meeting registration.

Questions regarding dues?

Call Kay Aumiller at (919) 844-0310.

General Information

Deadline for Headquarters Hotel Registration is FEBRUARY 29, 2008.

Reservations are now subject to guest room availability. Prevailing rates will apply. Please call for availability.

REGISTRATION DEADLINES:

ALL registration forms and checks must be received in the CAPCA Office no later than March 22, 2008. After this date, you must register at the meeting.

YOU ARE NOT CONSIDERED REGISTERED UNTIL CAPCA HAS RECEIVED A COMPLETED REGISTRATION FORM WITH PAYMENT.

Registrations Will Not be Accepted by Phone or Fax

CAPCA does not invoice, bill or accept credit cards. Checks accompanying your application must be payable to CAPCA.



EXHIBIT SPACE AVAILABLE

If you didn't receive an exhibition invitation, visit the CAPCA website at www.capca-carolinas.org or call today to receive the latest Spring and Fall exhibit information and updates.

CALL (919) 676-6099 FOR DETAILS.



2008 Spring Meeting • April 2nd-4th **Tentative Agenda**

WEDNESDAY, APRIL 2, 2008

10:00 – 4:30 PM - Registration

AFTERNOON TECHNICAL SESSIONS - 1:00-5:00 PM

Source Testing & Opacity/Visual Emissions: Executing successful stack testing and visual emissions monitoring from industry, regulator and testing firm perspectives

Break in Exhibit Area

Fine Particulate: Regulatory issues associated with PM_{2.5} condensables and precursors

5:30 – 7:30 PM - SYMPOSIUM

THURSDAY, APRIL 3, 2008

MORNING TECHNICAL SESSIONS - 8:30 AM-12:00 NOON

7:30 AM - COFFEE, ETC. IN EXHIBIT HALL

Registration Continues

EPA Update: activities and priorities for US EPA Region 4 on air quality matters

South Carolina Update: priorities and air quality activities by the S.C. Department of Health & Environmental Control.

Break in Exhibit Hall

North Carolina Update: issues and air quality activities before the N.C. Department of Environment & Natural Resources.

Local Program Update: issues and air quality activities in Buncombe, Forsyth, and Mecklenburg Counties

Air Directors Panel – Questions and Answers

CAPCA Bylaws Committee Report

12:00 – 1:00 PM - LUNCH

THURSDAY, APRIL 3, 2008

AFTERNOON TECHNICAL SESSIONS - 1:30-5:00 PM

Climate Change And Changing Climates: Panel review of state and federal activities on legislative, technical and regulatory issues surrounding this “hot” topic

Break in Exhibit Hall

Greenhouse Gas Inventories and Registries: Discussion on conducting GHG inventories and participating in registries.

5:30 – 7:30 PM - SYMPOSIUM

FRIDAY, FRIDAY APRIL 4, 2008

MORNING TECHNICAL SESSIONS - 8:30 AM-12:00 NOON

7:30 AM - COFFEE, ETC. IN EXHIBIT HALL

New Developments in Air Toxics – Session I: review of the recent activity associated with the vacated MACTs, MACT “Hammer”, and the Residual Risk program

Break in Exhibit Hall

Developments in Air Toxics – Session II: Impacts of upcoming Area Source MACTs and a case study of a local industry’s challenge with an air toxic

12 NOON – 1:30 PM - LUNCH & BUSINESS MEETING AND ADJOURN TECHNICAL MEETING

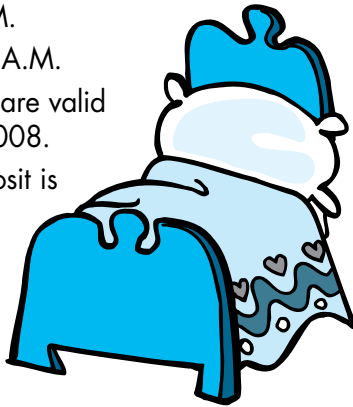
Lodging Information

HEADQUARTERS HOTEL GROVE PARK INN

290 Macon Avenue • Asheville, NC 28804
Tel. 1-800-438-5800
Group Code: 255568
(use on internet reservations only)

The conference is being held at the Grove Park Inn. For your convenience, call the hotel directly at 1-800-438-5800. Group Rates are \$119 single or double.

1. Check-In Time: 4:00 P.M.
2. Check-Out Time: 11:00 A.M.
3. Group rate reservations are valid through February 29, 2008.
4. A first night's room deposit is required with your reservation.
5. Cancellations must be received 7 days in advance of arrival for refund.



OVERFLOW HOTEL INFORMATION

Overflow accommodations have been made for your convenience at the:

CROWN PLAZA RESORT

1 Holiday Inn Drive • Asheville, NC 28806
Reservations: 1-800-733-3211
Direct Number: 828-285-2665
Code: Carolinas Air Pollution Control Assoc.

Just two minutes from downtown Asheville, The Resort is situated on over 150 beautifully landscaped acres and is a great place for a convention, festival, meeting, retreat, or just a vacation. The Resort has a 18-hole golf course, 8 tennis courts, fireside lounge, concierge staff, on-site fitness center, and rooms equipped with refrigerators, hair dryers and coffee makers.

1. Check-In Time: 3:00 P.M. (check for room availability if earlier)
2. Check-Out Time: 11:00 A.M.
3. Group Rate is \$84.
4. 72-hour cancellation policy
5. Group rate reservations are valid through March 2, 2008.

A screenshot of the CAPCA website homepage. The browser address bar shows "http://www.capca-carolinas.org/". The page features the CAPCA logo, contact information (P.O. Box 33430, Raleigh, NC 27636, Telephone & Fax 919.859.3926), and a navigation menu with links for "About CAPCA", "Conference & Exhibit Schedule", "Newsletter", "Contributor Program", "Conference Exhibitors", "Officers & Director", and "Other Site Links". A large "CAPCA" logo is prominently displayed. Below the logo, there is a welcome message: "Welcome to the Home Page of CAPCA, the Carolinas Air Pollution Control Association. We hope that you find this page informative and useful. This page will update often and we hope that you will visit often such that you may be informed of all current activities. Please let us know what you think of this page. You may e-mail your comments to anncapca@aol.com." At the bottom, there are buttons for "Join CAPCA", "Spring Meeting Newsletter", and "Fall Meeting Presentations".

Visit the
website for
the latest
developments
on the
upcoming
Spring 2008
Agenda.

www.capca-carolinas.org

CAPCA Spring GOLF Outing

Wednesday, April 2, 2008 • Grove Park Inn Golf Course

Coordinated by URS CORPORATION

Join us at the 39th CAPCA Spring Golf Outing (Captain's Choice) on Wednesday, April 2, 2008. We will be playing at the Grove Park Inn's Golf Course. The \$70 fee includes cart and green fees. Tee-times will start approximately at 10:00 AM.

Added Bonus - The negotiated \$70 fee (versus \$85 - \$150 normal fee) for CAPCA attendees applies to any round from Tuesday, April 1 through Friday, April 4, 2008. Identify yourself as a CAPCA attendee when you make your tee-times.

Charlie Isham (URS Corporation) is the Golf Coordinator. If you have nay questions, please e-mail Charlie at charlie_isham@urscorp.com.



The sign-up deadline is March 19th. Persons registering after this date will be charged a \$10 administrative fee per golfer. To receive a tee-time schedule, e-mail Charlie and request one. The schedule will be e-mailed to participants on the Monday prior to the outing. Note: CAPCA Policy allows for no refunds on golf. **You must notify Charlie / send your check payable to CAPCA prior to March 19, 2008.**

RETURN THIS FORM AND YOUR \$70 CHECK PAYABLE TO CAPCA TO:
CAPCA • P.O. Box 33430 • Raleigh, NC 27636

Name: _____

Company Name: _____

Address: _____

e-mail: _____

Phone: (____) _____

Fax: (____) _____

*Other paid & registered players I would like in my foursome:

1. _____ 3. _____

2. _____ 4. _____

*persons not paid & registered can not be assigned in a foursome

HANDICAP: _____ or My Typical GOOD Score: _____

REGISTRATION DEADLINE: MARCH 19, 2008

CAPCA OFFICE USE ONLY: Check Received: Yes No

Date Received: _____ Check # _____ Amount \$ _____



CAPCA

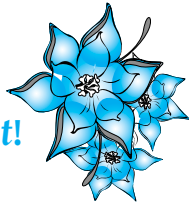
Post Office Box 33430
Raleigh, N.C. 27636-3430

PRE-SORTED
FIRST CLASS
U.S. POSTAGE
PAID
RALEIGH, N.C.
PERMIT NO. 2483

Spring Meeting Notice

Please help us be more efficient!

- Please remove me from the mailing list
 - Address/Name Change
- Make changes on address block & fax to (919) 676-6099



SPRING 2008 CAPCA ATTENDEE APPLICATION & DUES FORM

Mail to: P.O. BOX 33430 • RALEIGH, NC 27636

Name: _____

Preference on Name Tag: _____

Please check appropriate category: Academia Consultant Equipment Sales Industry Legal
 Regulatory Student Other _____

Company or Agency: _____

Mailing Address: _____

City/State/Zip: _____

Telephone: (____) _____ Fax: (____) _____

E-mail: _____

CAPCA OFFICE USE ONLY

Check/Cash received: ___ yes ___ no

Check # _____ Date Received _____

___ dues	\$35
___ pre-registration member.....	\$200
___ registration member	\$225
___ pre-registration non-member.....	\$250
___ registration non-member	\$275
___ Symposium (Wednesday)	\$50
___ Symposium (Thursday).....	\$50
___ Thursday Lunch.....	\$28
___ Friday Lunch.....	\$28
Amount Paid \$ _____	

Signature of Board Member

- Attendee Booth Worker; Booth # _____ FED I.D. #58-1314418

To save natural resources, please indicate if you need the following: I need a certificate of attendance.

ENCLOSED IS MY PAYMENT FOR THE FOLLOWING:

- ___ \$200 Member Pre-Registration (mailed by March 1, 2008)
- ___ \$225 Member Registration (walk-in/mailed after March 1, 2008)
- ___ \$35 - 2008 Member Dues
- ___ \$250 Non-Member Pre-Registration (mailed by March 1, 2008)
- ___ \$275 Non-Member Registration (walk-in/mailed after March 1, 2008)
- ___ \$ _____ Total Guest/Spouse Registration Enclosed

SPOUSE OR GUEST REGISTRATION FORM:

Participant's Name _____

Spouse/Guest's Name _____

- ___ \$50 Wednesday Night Symposium
- ___ \$50 Thursday Members Social
- ___ \$28 Thursday Lunch
- ___ \$28 Friday Lunch

YOUR CANCELLED CHECK IS YOUR RECEIPT Additional Receipt Required \$ _____ Total Amount Owed for Spouse/Guest

NO ACKNOWLEDGEMENT WILL BE SENT. MAKE A COPY FOR YOUR RECORDS.